

DISCOVER

Powerful Geospatial
Capabilities Designed for the
Natural Resources Industry

WHO USES DISCOVER?

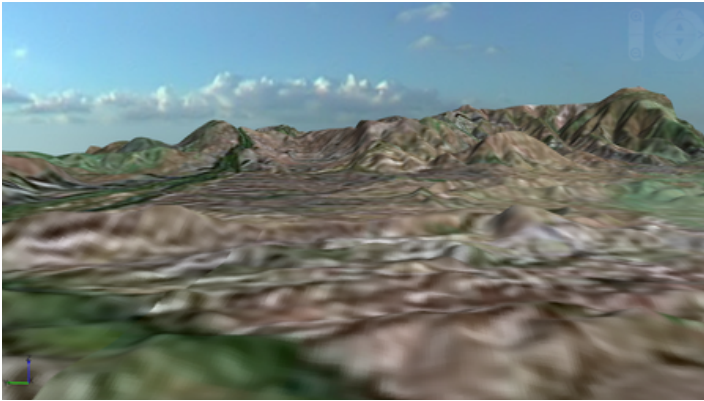
- Exploration Geologists
- Mine Geologists
- Geological Engineers
- Environmental Scientists
- GIS Analysts
- Council Officers

DATAMINE DISCOVER

Built on the powerful MapInfo Pro GIS platform, **Datamine Discover** is the comprehensive and essential package for the compilation, mapping and analysis of spatial geosciences data, whether you are conducting mineral exploration, hydrological analysis or environmental assessments.

With **Datamine Discover 3D**, you can effortlessly transition MapInfo Pro datasets into an intuitive 3D environment. Rapidly visualise, evaluate and model your drillhole and related datasets in true 3D, and then dynamically test your theories.

DATAMINE DISCOVER 3D



With **Datamine Discover 3D**, you can effortlessly transition MapInfo Pro datasets into an intuitive 3D environment. Rapidly visualise, evaluate and model your drillhole and related datasets in 3D. Visualising your data in 3D is easy, whether draping aerial photography over a terrain surface, assessing drillholes or viewing geochemical datasets.

Datamine Discover 3D uses on-the-fly dataset reprojection ensuring a comparable experience to MapInfo Pro.

Gain a fresh perspective on your data, identifying and analysing subtle trends in 3D not apparent in the 2D environment.

Utilise powerful modelling capabilities, from solid wireframing and extrusions through to block/voxel model interpolation.

Share 3D environments with the free Datamine Discover 3D Viewer and produce eye-catching and immersive movies of your project.

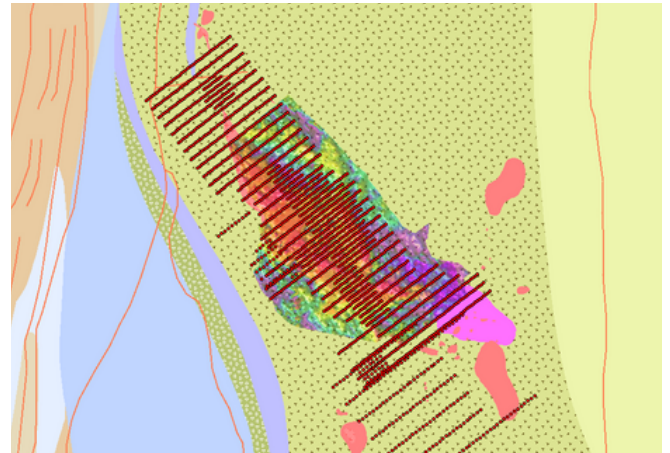
“

Discover is a great tool for the exploration stage. The Drillholes -> Project Manager is one of my favourite tools. It's very useful to validate DH data, sectional interpretation, and also to be able to generate sectional resources and grade.

-Jose Da Costa, Mineral Geologist.

KEY FEATURES & BENEFITS

- ✓ Import and display a vast array of data from multiple sources
- ✓ Display all your geochemical, drillhole, geological and geophysical data in one simple GIS environment
- ✓ Utilise the extensive analytical and querying tools for graphical, statistical, spatial and temporal analysis
- ✓ Create professional quality cartographic maps
- ✓ Import, display and analyse raster and grid datasets with the extensive toolkits available
- ✓ Comprehensive Drillhole tools for validation, analysis, presentation and export
- ✓ Display, import and export all your GPS data
- ✓ Enjoy all the tools and functions available with the industry standard MapInfo Pro software
- ✓ Visualise and analyse your GIS in a 3D environment
- ✓ Bring your desktop GIS data out to the field, collecting and analysing with Discover Mobile
- ✓ Seamlessly display and analyse data between Discover to Discover Mobile to Discover 3D



DISCOVER 2021

- New Scaled Layout tool
- New Gridline Planner tool
- Simplified Drillhole section creation
- Full trench data support
- Big Tiff image support
- XYZ tile server viewing

DISCOVER 3D

- Brand new ribbon interface
- New Cursor Plane menu
- Simplified dialog and tool interfaces
- Vast speed improvements displaying Drillhole data
- Unified Drillhole database
- New Drillhole cones tool
- Full trench data support
- Wavefront OBJ file support

DISCOVER MOBILE

- Capture track while using other mobile functions
- Capture non spatial data such as downhole drill data
- Capture structure data with device sensors
- Display structure data with correct symbology

SPECIFICATIONS

Datamine Discover 2021 installs and licenses the following components:

- MapInfo Pro Advanced 2019.3 (incorporating MapInfo Raster)
- Datamine Discover 2021
- Datamine Discover 3D 2021 (optional license extension)
- Datamine Discover Mobile (for all users under maintenance)

Supported Operating Systems:

- Windows 10
- Windows 8.1
- Windows 8

DISCOVER MOBILE (AVAILABLE WITH DISCOVER 2021)

- Install on all compatible Android and iOS devices
- Set up tables and picklists to take out into the field
- View and analyse image, grid and vector layers in the field
- Navigate to selected features with an intuitive interface and design
- Quickly collect data based on drop down lists and link data entries to photographs and audio
- Collect structural data with phone sensors
- Sync data to the desktop and source files for seamless data flow between the office and the field

BOOK A DEMO

AUSTRALIA | BRAZIL | CANADA | CHILE | CHINA | ECUADOR |
GHANA | INDIA | INDONESIA | KAZAKHSTAN | MALAYSIA |
MEXICO | MONGOLIA | PERU | PHILIPPINES | RUSSIA | SOUTH
AFRICA | TURKEY | UNITED KINGDOM | USA