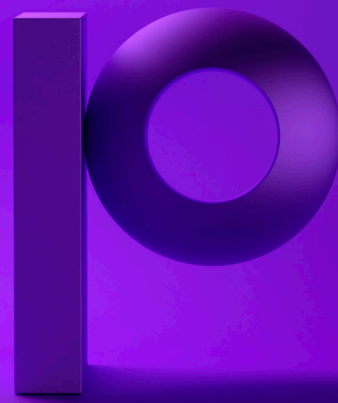




MapInfo Pro v2023



precisely

MapInfo Pro v2023

Unlock the next dimension in spatial analytics with the powerful, easy-to-use GIS you expect

Location data adds both insight and complexity to corporate decision-making. Mistakes are too expensive for a trial-and-error approach to mapping. For example, if you've opened a new fast-food restaurant, you can't relocate it once you realize you made a poor decision and you're not drawing the crowds you need.

MapInfo Pro is an easy-to-use geographic information system (GIS) that helps you more easily capture, manage, analyze, and visualize location data — revealing relationships, patterns, and trends.

The latest addition of 3D visualization in MapInfo Pro v2023 offers an engaging way to convey complex spatial context to a broader audience and unlocks endless possibilities for urban planning, coastal modeling, and disaster management. Share business-critical findings with different teams and departments to enable quick access to location-based context across your organization.

Use MapInfo Pro to explore, model, and act upon the world around you.

Explore

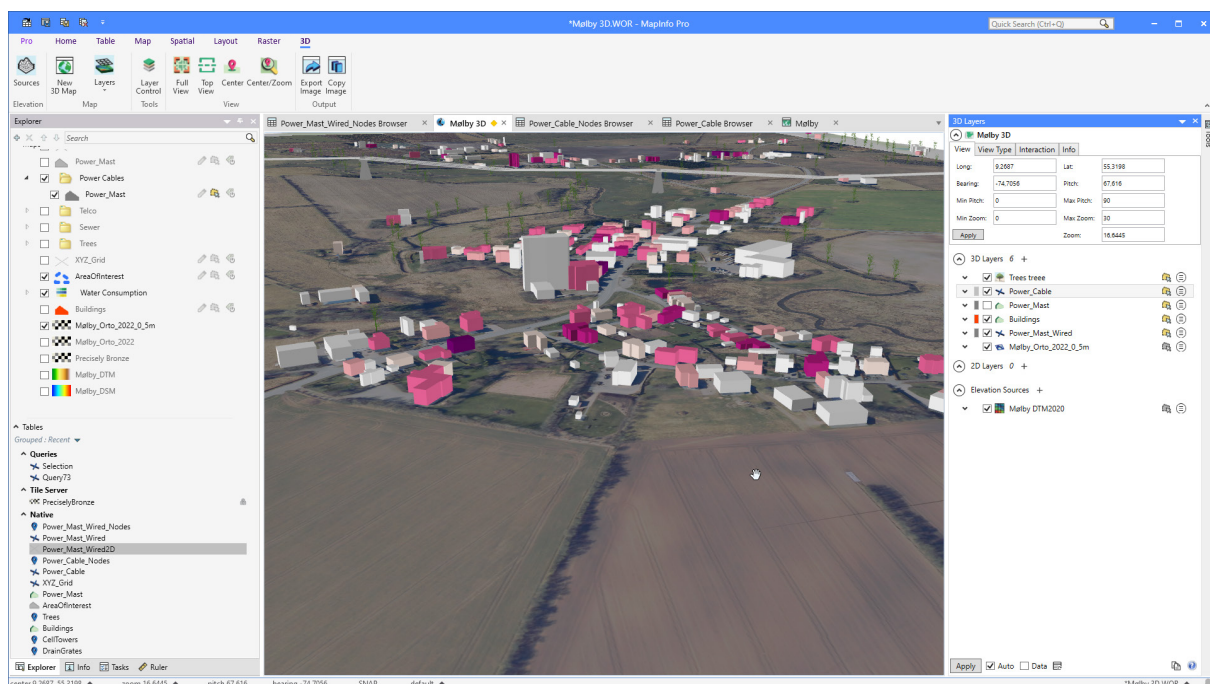
Better understand a location by gathering information about its key features and how they interact. Visualize data through map symbols, themes, and labels. You can even overlay multiple datasets on a single map to distinguish patterns that would otherwise be hidden.

Model

Integrate your corporate data with maps and demographics by turning addresses into locations. Combine this information with our powerful spatial querying and modeling tools. Run different scenarios for an accurate, up-to-date representation of a location's possibilities.

Act

Build models that are easily understood. Enable corporate decision-makers to understand each site and scenario's attributes and drawbacks fully. Help them take the type of action that propels your business forward.



MapInfo Pro helps you explore, model, and act upon locations throughout the world.



The powerful tools of MapInfo Pro

MapInfo Pro offers expansive support for diverse data formats, so GIS professionals like you can unlock spatial context and visualize location information on your terms. At the same time, customizable features help you tailor your MapInfo Pro experience to fit your unique workflow.

With additional features introduced or enhanced with the latest version of MapInfo Pro, you can:

Easily take advantage of a three-dimensional view of risks and opportunities



MapInfo Pro powers better decision-making with a cutting-edge 3D view.

We live in a 3D world, so visualizing three-dimensional spatial data provides a more comprehensive and realistic representation of terrain, buildings, and objects. With MapInfo Pro, you can visualize your 3D data and power better decision-making without additional tools or extensions.

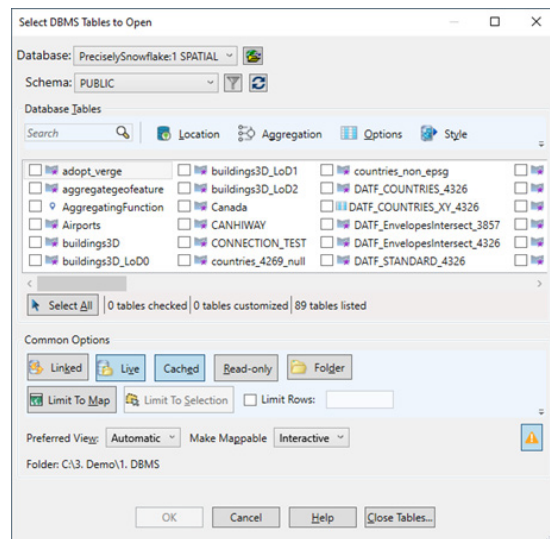
- Unlock endless possibilities across industries by visualizing your 3D data using OpenGL rendering.
 - Network planning: find an optimal location and height for a cell tower based on the line of sight, terrain, vegetation, and any potential obstruction affecting signal strength.
 - Disaster management: identify areas with the highest risk of damage and plan for evacuation or shelter with 3D models of terrain, buildings, and infrastructure.
 - Natural resources management: assess environmental impact, locate potential mining sites, and make more informed decisions about land use.
 - Urban planning: design and develop cities more effectively by analyzing spatial data, zoning, infrastructure, and architectural aspects in a detailed 3D environment.
- Display data in 2D and 3D simultaneously to reveal patterns and relationships not seen in traditional representations.
- Add dimension to your data by appending elevation or other dimensional attributes with MapBasic tools and statements.

Seamlessly connect to enterprise-level spatial analytics

The days of a lone GIS analyst are gone. The modern GIS analyst is part of a larger team of business experts, database experts, and developers – and all these stakeholders require quick access to location-based context to make better decisions.

- Maximize data collaboration and sharing by connecting to Spectrum Spatial - our enterprise location intelligence solution.
- Connect to the Spectrum Spatial Feature Service to view and edit vector data.
- Save time on data prep and enhance productivity by streamlining the upload of MapInfo TAB files to Spectrum Spatial.

Optimize spatial data workflows with Snowflake



Select only the data you need and decide how you want to interact with it.

- Connect directly to the Snowflake Data Cloud to access, edit, visualize spatial data and create maps effortlessly.
- Update data dynamically in MapInfo Pro and push changes back to Snowflake without disruption.
- Choose between live connections or working offline with downloaded subsets to fit your workflow.
- Automatically identify spatial columns with correct projections and access only the data you need using filters like row limit, map extent, or selection coverage.
- Enjoy faster performance when working with large datasets thanks to server-side processing, improved caching, and proactive warnings.

Accelerate time to insight with an enhanced location analytics toolkit

- Enjoy smooth navigation and increased productivity by unlocking user-requested enhancements.
- Onboard custom tools with targeted functionality in seconds with updated MapInfo Marketplace.

Expert support

- Talk to our technical support staff live. Get trusted advice on implementation, optimization, troubleshooting, and issue resolution.
- Use our online case-management system for logging and tracking issues requiring support.
- Access the Precisely online knowledge base for product documentation and other resources.
- Follow the MapInfo Pro Knowledge Community to enhance your skills, find answers, and get inspired for your next project.

Next-generation location analytics made easy

Experience the value of a complete desktop mapping solution for the GIS professional to manage, analyze, visualize, and publish location-based data, connecting data and enterprise mapping throughout your organization.

MapInfo Pro is available as a subscription service. One- and three-year subscriptions offer maintenance, automatic notification of updates, and features formerly only available in MapInfo Pro Advanced. These enhancements include 3D map creation and our patented Multi-Resolution Raster (MRR) data format - a game changer for analysts in the agriculture, oil and gas, and telecom industries.

Specifications

MapInfo Pro v2023

Windows 10 (64-bit)

Windows 11 (64-bit)

Windows 2019 Server (64-bit)

Windows 2019 Server (64-bit with XenApp)

Windows 2019 Server (64-bit with Citrix Virtual Apps)

Windows 2022 Server (64-bit)

[View the complete list](#)

Try it for free

Make the move to MapInfo Pro today. Get increased GIS power with a convenient, flexible subscription.

[Access our 30-day free trial today.](#)